



# PINCES À MAIN

POUR RIVETS AVEUGLES

MODE D'EMPLOI

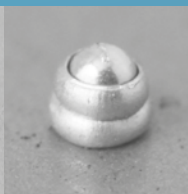
## E-500RH



min.  
Ø **3.0** mm



max.  
Ø **4.8** mm

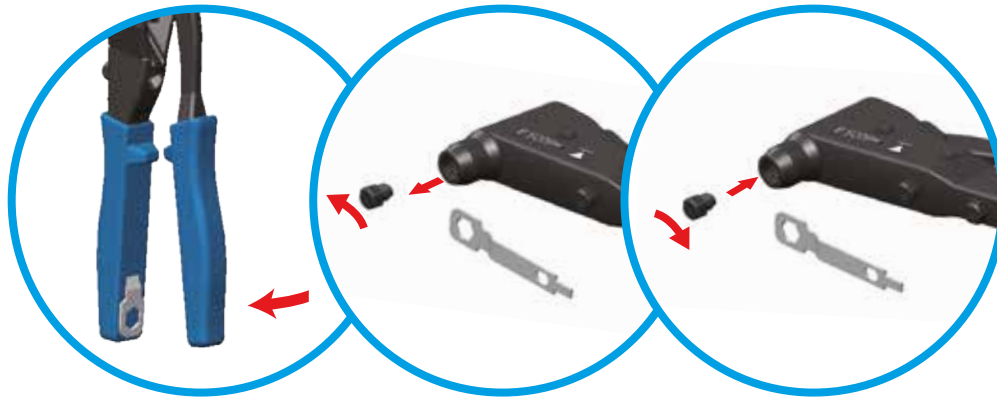


# CARACTÉRISTIQUES ET DIMENSIONS DE LA PINCE

**Capacité :** Ø3.0 à 4.8 mm (4.8mm pour aluminium et acier uniquement)  
**Longueur :** 255 mm  
**Poids :** 0.7 kg  
**Matière corps :** Aluminium moulé  
**Matière poignées :** Plastique ABS



## RÉGLAGE



CLÉ

NEZ DE POSE



B : Ø3.0/3.2



C : Ø4.0



D : Ø4.8/5.0

## UTILISATION



FR

EN

PL



FR  
EN  
PL

# REPLACEMENT DU MORS

## 1. DÉVISSER LE MORS AVEC LA CLÉ



## 2. VISSER LE NOUVEAU MORS AVEC LA CLÉ



# HAND TOOL

FOR BLIND RIVETS

# USER MANUAL

## E-500RH

DESIGNED IN FRANCE BY  
**Scell-it®**



min.  
Ø **3.0** mm



max.  
Ø **4.8** mm

**Scell-it®**

28 rue Paul Dubrule - 59810 LESQUIN - Tél. : 03 20 32 98 18 - www.scellit.com

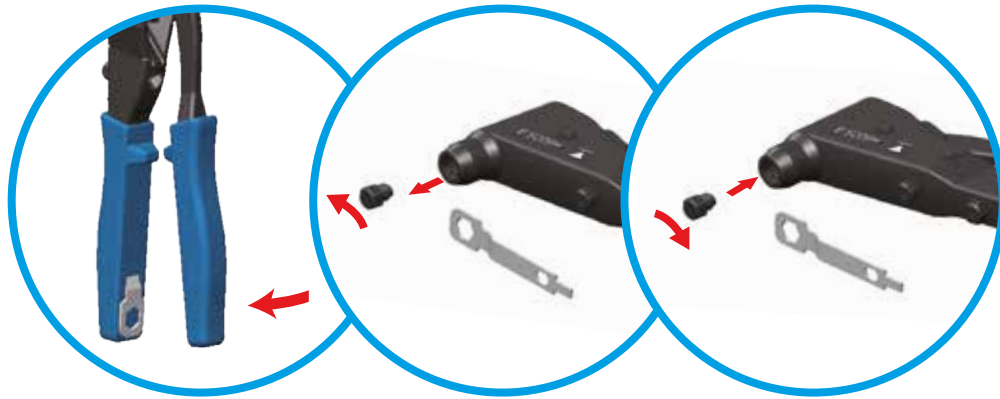


# TOOL CAPACITIES AND SPECIFICATIONS

**Capacities:** Ø3.0 à 4.8 mm (4.8mm for aluminium and steel only)  
**Length:** 255 mm  
**Weight:** 0.7 kg  
**Body material:** cast aluminium  
**Handles material:** ABS



# SETTING



WRENCH

NOSES PIECES



B : Ø3.0/3.2



C : Ø4.0



D : Ø4.8/5.0

# OPERATION



# UNINSTALLATION OF JAW

## 1. SCREW OFF THE JAW WITH THE WRENCH



## 2. SCREW ON THE NEW JAW WITH THE WRENCH



# NITOWNICE

RĘCZNE

INSTRUKCJA OBSŁUGI

## E-500RH

DESIGNED IN FRANCE BY  
**Scell-it®**



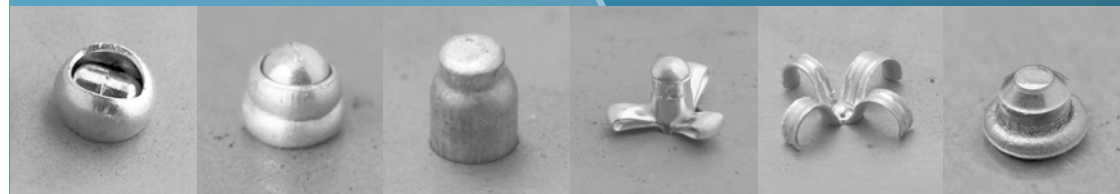
min.  
Ø **3.0** mm



maks.  
Ø **4.8** mm

**Scell-it®**

28 rue Paul Dubrule - 59810 LESQUIN - Tél. : 03 20 32 98 18 - www.scellit.com





# ZAKRES NARZĘDZIA I SPECYFIKACJA

**Zakres:** Ø3.0 à 4.8 mm (4.8mm tylko dla aluminium i stal)

**Długość:** 255 mm

**Waga netto:** 0.7 kg

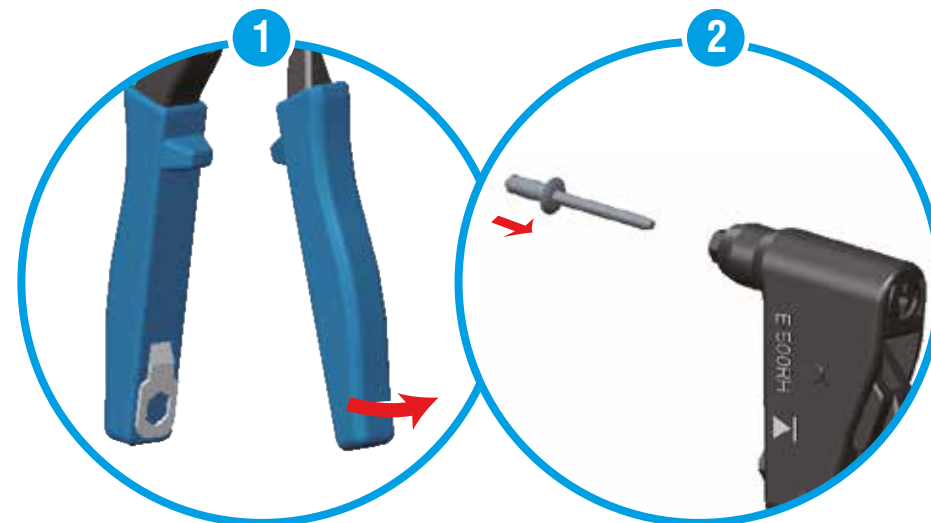
**Materiał głowica:** Aluminium

**Materiał uchwyt:** ABS plastik

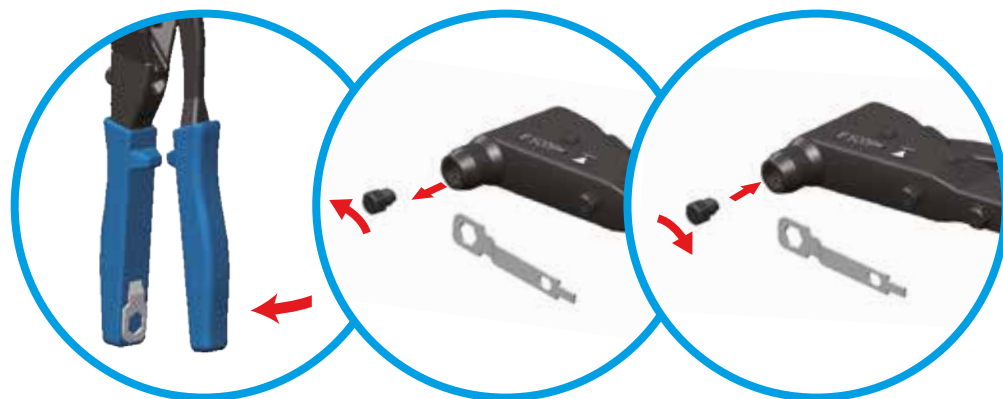


# EKSPLOATACJA

FR  
EN  
PL



# USTAWIENIA



KLUCZEM

KOŃCÓWKI



B : Ø3.0/3.2



C : Ø4.0



D : Ø4.8/5.0

# ODINSTALOWANIE SZCZĘKI ZACISKKOWE

## 1.ODKRĘĆ SZCZĘKI ZACISKKOWE



## 2.PRZYKRĘĆ SZCZĘKI ZACISKKOWE

